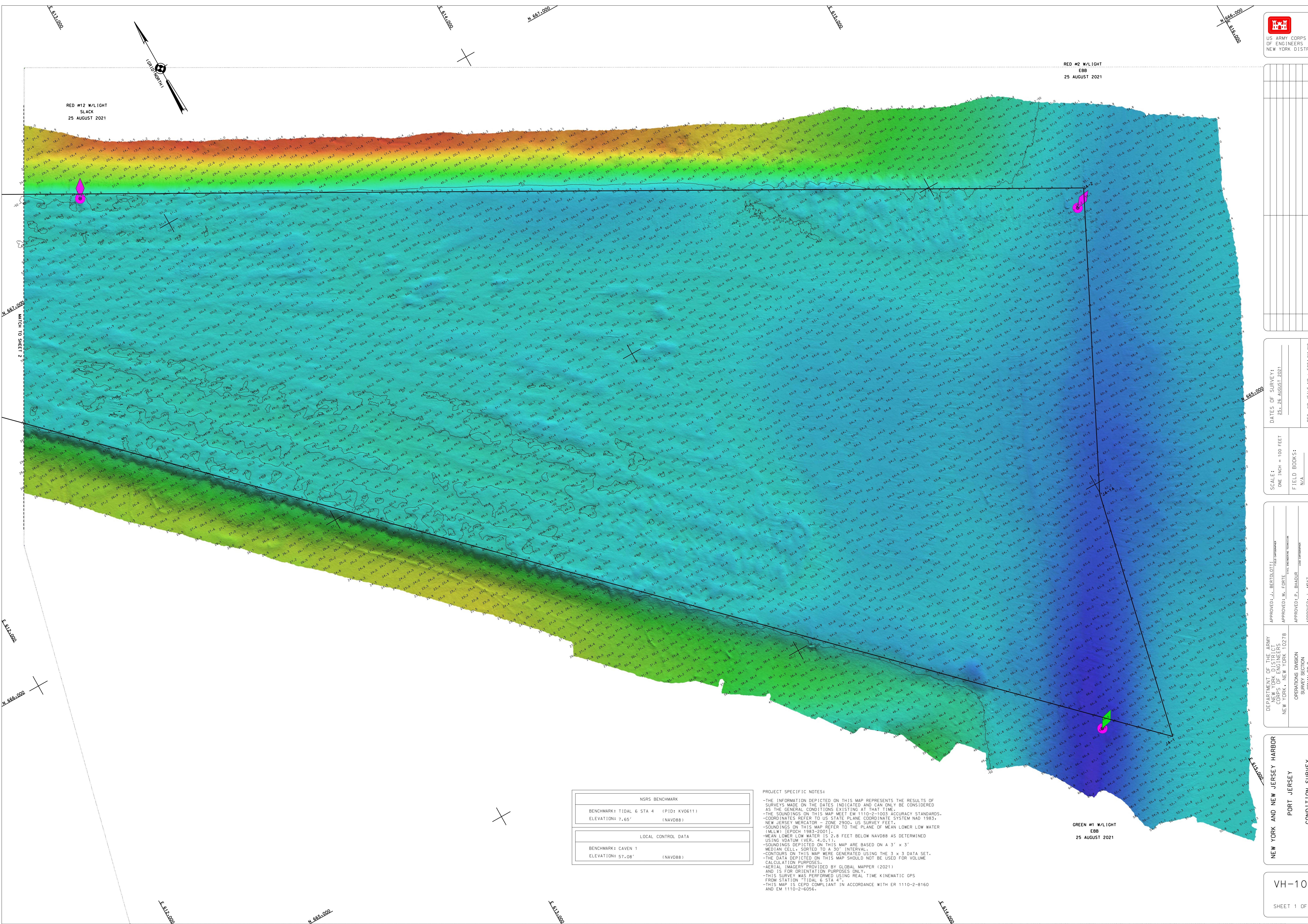


U.S. ARMY CORPS OF ENGINEERS NEW YORK DISTRICT

RED #2 W/LIGHT
EBB
25 AUGUST 2021

RED #12 W/LIGHT
SLACK
25 AUGUST 2021



NSRS BENCHMARK	
BENCHMARK: TIDAL 6 STA 4 (PID: KV0611)	(NAVD88)
ELEVATION: 7.65'	
LOCAL CONTROL DATA	
BENCHMARK: CAVEN 1	(NAVD88)
ELEVATION: 57.08'	

PROJECT SPECIFIC NOTES:

- THE INFORMATION DEPICTED ON THIS MAP REPRESENTS THE RESULTS OF SURVEYS MADE ON THE DATES INDICATED AND CAN ONLY BE CONSIDERED AS THE GENERAL CONDITIONS EXISTING AT THAT TIME.
- THE SOUNDINGS ON THIS MAP MEET EM 1110-2-1003 ACCURACY STANDARDS.
- COORDINATES REFER TO US STATE PLANE COORDINATE SYSTEM NAD 1983, NEW JERSEY MERCATOR - ZONE 2900, US SURVEY FEET.
- SOUNDINGS ON THIS MAP REFER TO THE PLANE OF MEAN LOWER LOW WATER (MLLW) (EPOCH 1983-2001).
- MEAN LOWER LOW WATER IS 2.8 FEET BELOW NAVD88 AS DETERMINED USING VDATUM (VER. 4.0.11).
- SOUNDINGS DEPICTED ON THIS MAP ARE BASED ON A 3' x 3' MEDIUM CELL - SORTED TO A 10' INTERVAL.
- CONTOURS ON THIS MAP WERE GENERATED USING THE 3 x 3 DATA SET.
- THE DATA DEPICTED ON THIS MAP SHOULD NOT BE USED FOR VOLUME CALCULATION PURPOSES.
- AERIAL IMAGERY PROVIDED BY GLOBAL MAPPER (2021) AND IS FOR ORIENTATION PURPOSES ONLY.
- THIS SURVEY WAS PERFORMED USING REAL TIME KINEMATIC GPS FROM STATION TIDAL 6 STA 4."
- THIS MAP IS CEPD COMPLIANT IN ACCORDANCE WITH ER 1110-2-B160 AND EM 1110-2-6056.

GREEN #1 W/LIGHT
EBB
25 AUGUST 2021

DATE	BY	REVISION

SCALE: ONE INCH = 100 FEET
FIELD BOOKS: N/A

DATES OF SURVEY:
25-26 AUGUST 2021

REQ. NO./FILE NO.: 5094/AN/2

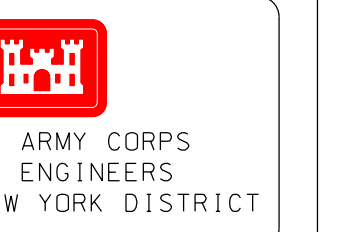
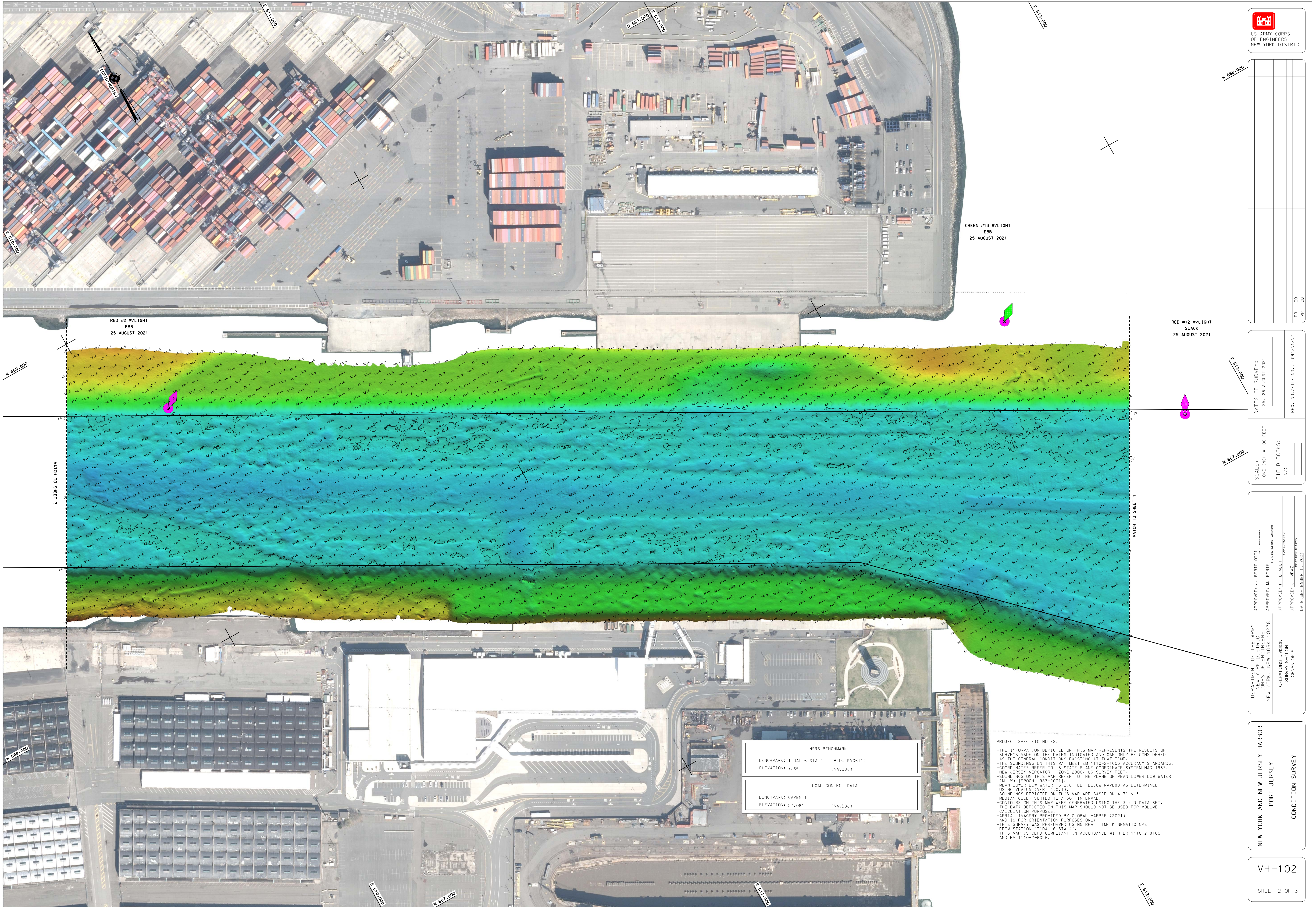
APPROVED: J. BEGETO, DTL
APPROVED: M. EDGIE
APPROVED: P. BIRDOR
APPROVED: J. WRAZ

DEPARTMENT OF THE ARMY
CORPS OF ENGINEERS
NEW YORK DISTRICT
NEW YORK, NEW YORK 10278

OPERATIONS DIVISION
NEW YORK DISTRICT
NEW YORK, NEW YORK

APPROVED: J. BEGETO, DTL
APPROVED: M. EDGIE
APPROVED: P. BIRDOR
APPROVED: J. WRAZ

NEW YORK AND NEW JERSEY HARBOR
PORT JERSEY
CONDITION SURVEY



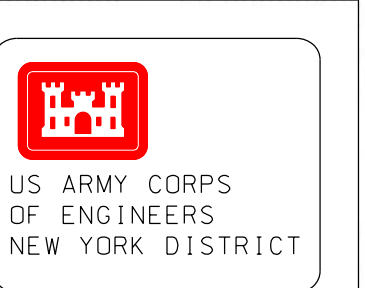
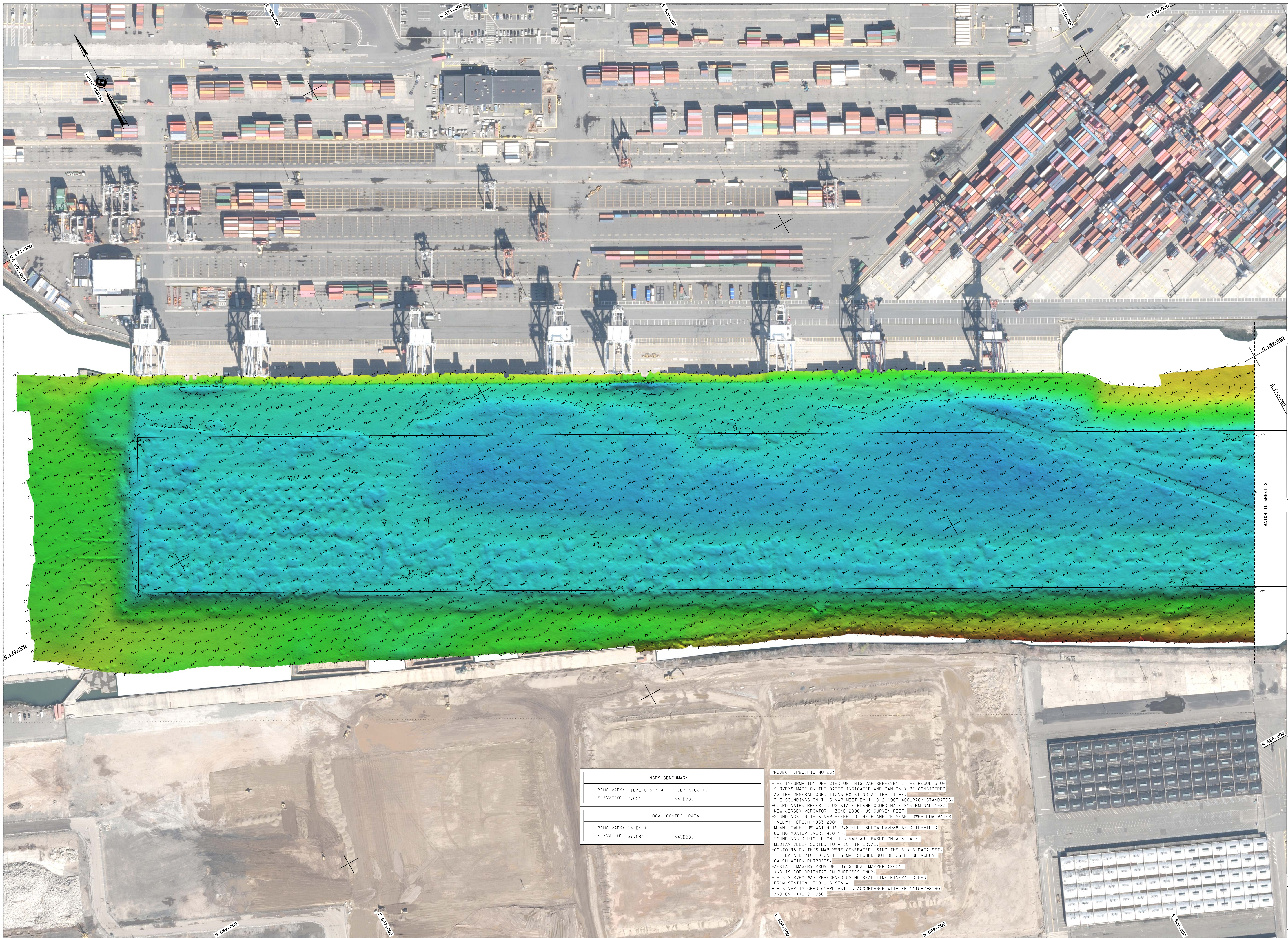
DATE OF SURVEY: 25-26 AUGUST 2021	REQ. NO./FILE NO.: 5094/AV12
SCALE: ONE INCH = 100 FEET	FIELD BOOKS: N/A
APPROVED: J. BERTELLO SUPERVISOR	APPROVED: J. WRAZ DATE: SEPTEMBER 14, 2021
APPROVED: M. EDGIE SUPERVISOR	
APPROVED: P. BERGQUIST SUPERVISOR	
APPROVED: J. WRAZ DATE: SEPTEMBER 14, 2021	

DEPARTMENT OF THE ARMY CORPS OF ENGINEERS NEW YORK, NEW YORK 10278	OPERATIONS DIVISION NEW YORK HARBOR NEW YORK, NY 10278
--	--

PROJECT: NEW YORK AND NEW JERSEY HARBOR PORT JERSEY	CONDITION SURVEY
VH-102	SHEET 2 OF 3

NSRS BENCHMARK	
BENCHMARK: TIDAL 6 STA 4 (IPID: KV0611)	(INAV08)
ELEVATION: 7.65'	
LOCAL CONTROL DATA	
BENCHMARK: CAVEN 1	(INAV08)
ELEVATION: 57.08'	

PROJECT SPECIFIC NOTES:
 -THE INFORMATION DEPICTED ON THIS MAP REPRESENTS THE RESULTS OF SURVEYS MADE ON THE DATES INDICATED AND CAN ONLY BE CONSIDERED AS THE GENERAL CONDITIONS EXISTING AT THAT TIME.
 -THE SOUNDINGS ON THIS MAP MEET EM 1110-2-1003 ACCURACY STANDARDS.
 -COORDINATES REFER TO US STATE PLANE COORDINATE SYSTEM NAD 1983 - NEW JERSEY MERCATOR - ZONE 2900, US SURVEY FEET.
 -SOUNDINGS ON THIS MAP REFER TO THE PLANE OF MEAN LOWER LOW WATER (MLLW) (EPOCH 1983-2001).
 -MEAN LOWER LOW WATER IS 2.8 FEET BELOW NAVD88 AS DETERMINED USING VDatum (VER. 4.0.11).
 -SOUNDINGS DEPICTED ON THIS MAP ARE BASED ON A 3' x 3' MESH CELL - SORTED TO A 50' INTERVAL.
 -CONTOURS ON THIS MAP WERE GENERATED USING THE 3 x 3 DATA SET.
 -THE DATA DEPICTED ON THIS MAP SHOULD NOT BE USED FOR VOLUME CALCULATION PURPOSES.
 -AERIAL IMAGERY PROVIDED BY GLOBAL MAPPER (2021) AND IS FOR ORIENTATION PURPOSES ONLY.
 -THIS SURVEY WAS PERFORMED USING REAL TIME KINEMATIC GPS FROM STATION "TIDAL 6 STA 4".
 -THIS MAP IS CEPD COMPLIANT IN ACCORDANCE WITH ER 1110-2-8160 AND EM 1110-2-6056.



PH	ED
MP	CB

DATE OF SURVEY:
25-26 AUGUST 2021

REQ. NO./FILE NO.: 5094/NI/2

SCALE:
ONE INCH = 100 FEET

FIELD BOOKS:
N/A

APPROVED: J. BEETO, DTL

APPROVED: M. ERDIE

APPROVED: P. BRIDGER

DATE: SEPTEMBER 1, 2021

DEPARTMENT OF THE ARMY
CORPS OF ENGINEERS
NEW YORK, NEW YORK 10278

OPERATIONS DIVISION
SOUNDINGS SECTION
NEW YORK

NEW YORK AND NEW JERSEY HARBOR
PORT JERSEY
CONDITION SURVEY

VH-103
SHEET 3 OF 3

NSRS BENCHMARK	
BENCHMARK: TIDAL 6 STA 4 (PID: KV0611)	
ELEVATION: 7.65'	(NAVD88)
LOCAL CONTROL DATA	
BENCHMARK: CAVEN 1	
ELEVATION: 57.08'	(NAVD88)

PROJECT SPECIFIC NOTES:

- THE INFORMATION DEPICTED ON THIS MAP REPRESENTS THE RESULTS OF SURVEYS MADE ON THE DATES INDICATED AND CAN ONLY BE CONSIDERED AS THE GENERAL CONDITIONS EXISTING AT THAT TIME.
- THE SOUNDINGS ON THIS MAP MEET EM 1110-2-1003 ACCURACY STANDARDS.
- COORDINATES REFER TO US STATE PLANE COORDINATE SYSTEM NAD 1983, NEW JERSEY MERCATOR ZONE 2900, US SURVEY FEET.
- SOUNDINGS ON THIS MAP REFER TO THE PLANE OF MEAN LOWER LOW WATER (MLLW) [EPOCH 1983-2001].
- MEAN LOWER LOW WATER IS 2.8 FEET BELOW NAVD88 AS DETERMINED USING VDATUM AVER. 4-0-11.
- SOUNDINGS DEPICTED ON THIS MAP ARE BASED ON A 3' x 3' MEDIAN CELL, SORTED TO A 30' INTERVAL.
- CONTOURS ON THIS MAP WERE GENERATED USING THE 3 x 3 DATA SET, AND IS FOR ORIENTATION PURPOSES ONLY.
- AERIAL IMAGERY PROVIDED BY GLOBAL MAPPER (2021)
- THIS SURVEY WAS PERFORMED USING REAL TIME KINEMATIC GPS FROM STATION "TIDAL 6 STA 4".
- THIS MAP IS CEPO COMPLIANT IN ACCORDANCE WITH ER 1110-2-8160 AND EM 1110-2-6056.